

Intelligent Estimating
by Qapter

Automatically generate a line-by-line estimate with Qapter Intelligent Estimating

Delivering accurate results earlier in the workflow using unmatched data, data science and repair science for a seamless digital journey

Key capabilities

- Detect damage in external parts of vehicles by processing images through AI and adding contours around the affected areas for easy validation
- Determine the right spare parts and most accurate and safe repair operations
- Automatically create line-by-line estimates
- Provide more accurate, consistent triage recommendations
- Allocate and manage vehicle repairs faster within the repair network
- Collaborate with repairers and appraisers to manage a repair quicker to resolution

Modularity

Qapter's modules can be used together as a seamless, end-to-end digital workflow or be used individually to satisfy other use cases as required by carrier:

- Guided Damage Capture
- Intelligent Damage Detection
- Intelligent Triage & Routing
- Intelligent Review & Authorization
- Intelligent Estimating
- Mobile Estimating

Benefits

- Reduced cycle times
- Decreased staff appraiser times
- Superior customer experience
- An increase in accuracy and consistency of the estimating process
- Making better decisions at underwriting
- Patented, VIN-based vehicle outline technology generates better images for AI processing
- Instant image shares throughout the supply chain improves communication and accuracy
- A cloud solution provides faster implementation and reduced hosting costs

qapter.com

© Solera Holdings, LLC

 **SOLERA**
Vehicle Claims

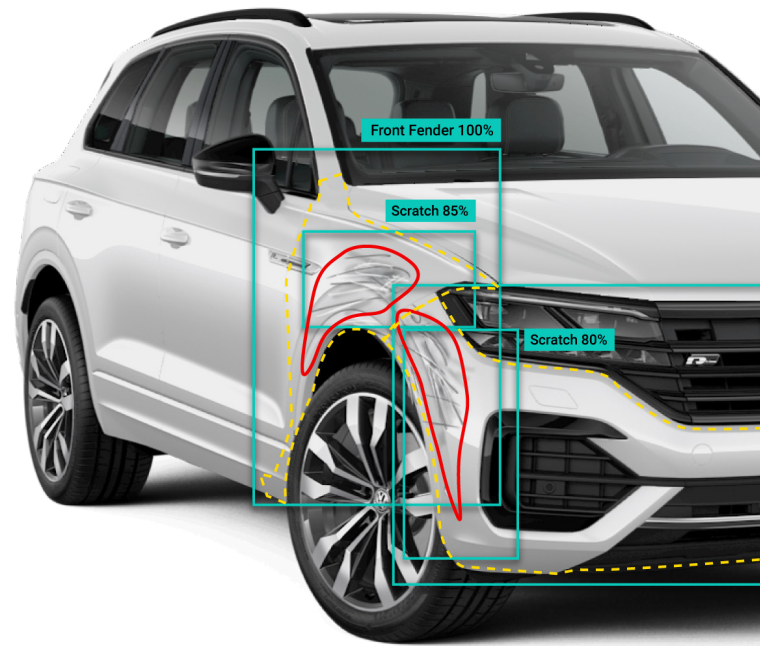
Intelligent Estimating
by Qapter

50% estimates automatically generated for:

- Faster approvals
- Earlier parts ordering
- Reduced key-to-key times

Estimates created in under 3 minutes for review:

- Fewer errors
- Greater consistency
- More focus on complex claims



**Visual
intelligence**



**Repair
Science™**



**Automated
line-by-line
estimate**

Qapter Intelligent Estimating is Solera's next generation claims management solution for the automotive industry powered by artificial intelligence(AI):

- Delivers AI/ML in the workflow through productized solutions, reducing integration efforts and time to market
- Provides global reach and unmatched depth and quality of data which allows for real-time training of the AI/ML models, across all car parts
- Leverages AI and ML at the core along with a strong dataset strategy across all points within the claim life cycle, supporting a seamless, automated flow between insurers, repairers and assessors, which both facilitates and accelerates adoption
- Scalable platform to meet specific business needs and requirements

Qapter Visual Intelligence combines proven data science with repair science technology and knowledge spanning 50 years, incorporating a rich data lake of over 300 million claims worldwide.

qapter.com

© Solera Holdings, LLC

 **SOLERA**
Vehicle Claims

Intelligent Estimating
by Qapter